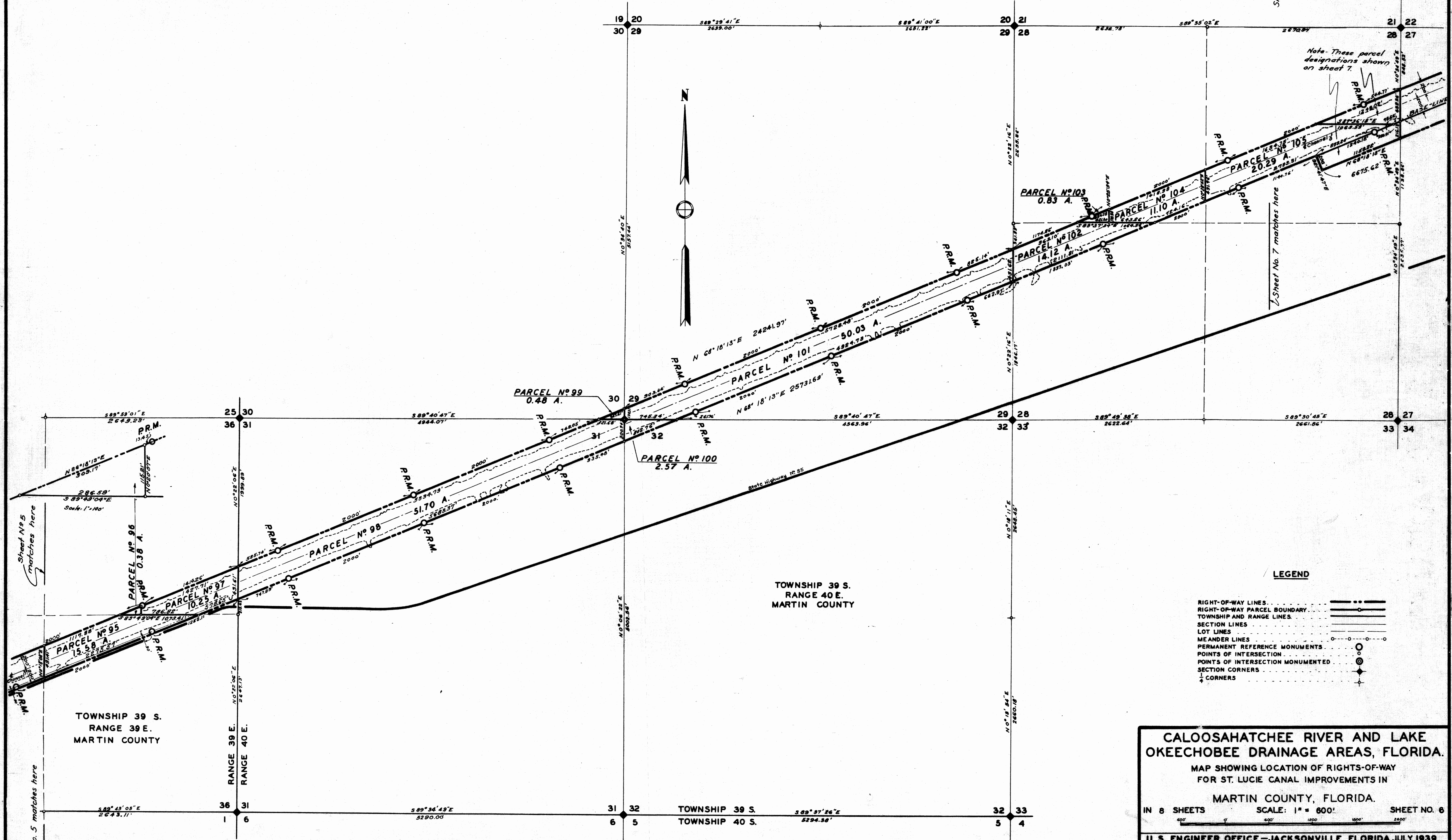


Sheet 6 of File No 18375 of 2-35

TABULATION OF RIGHT-OF-WAY PARCELS AND PROUREMENT DATA										
PARCEL	DIVISION	SECTION	TOWNSHIP	RANGE	ACREAGE	D.O. INDEX NO.	DATE	METHOD	PRICE PAID	PARTY OR PARTIES FROM WHOM ACQUIRED
95	G	36	39 S	39 E	18.88	3595				
96	G	36	39 S	39 E	0.38	3596				
97	G	36	39 S	39 E	10.25	3597				
98	G	31	39 S	40 E	51.70	3598				
99	G	30	39 S	40 E	0.48	3599				
100	G	32	39 S	40 E	2.57	3600				
101	G	29	39 S	40 E	50.03	3601				
102	G	28	39 S	40 E	11.10	3602				
103	G	28	39 S	40 E	0.83	3603				
104	G	28	39 S	40 E	11.10	3604				
105	G	28	39 S	40 E	20.29	3605				



Note: These parcel designations shown on sheet 7.

- LEGEND**
- RIGHT-OF-WAY LINES
 - RIGHT-OF-WAY PARCEL BOUNDARY
 - TOWNSHIP AND RANGE LINES
 - SECTION LINES
 - LOT LINES
 - MEANDER LINES
 - PERMANENT REFERENCE MONUMENTS
 - POINTS OF INTERSECTION
 - POINTS OF INTERSECTION MONUMENTED
 - SECTION CORNERS
 - CORNERS

CALOOSAHATCHEE RIVER AND LAKE OKEECHOBEE DRAINAGE AREAS, FLORIDA.
 MAP SHOWING LOCATION OF RIGHTS-OF-WAY FOR ST. LUCIE CANAL IMPROVEMENTS IN MARTIN COUNTY, FLORIDA.

IN 8 SHEETS SCALE: 1" = 600' SHEET NO. 6

U. S. ENGINEER OFFICE - JACKSONVILLE, FLORIDA, JULY, 1939.

SUBMITTED: [Signature] ASSISTANT ENGINEER
 RECOMMENDED FOR APPROVAL: [Signature] SENIOR ENGINEER
 APPROVED: [Signature] COLONEL, CORPS OF ENGINEERS

DRAWN BY: V.C.-D.S.M. FILE NO. 302-12,260
 TRACED BY: R.M.S.-C.C.K.
 CHECKED BY: G.F.A.-R.M.E.

Sheet No. 5 matches here

Sheet No. 7 matches here

Sheet No. 7 matches here